



MONTHLY MEMBERSHIP PROGRESS REPORT

Results as of: 1/31/2015

Multiple District 3

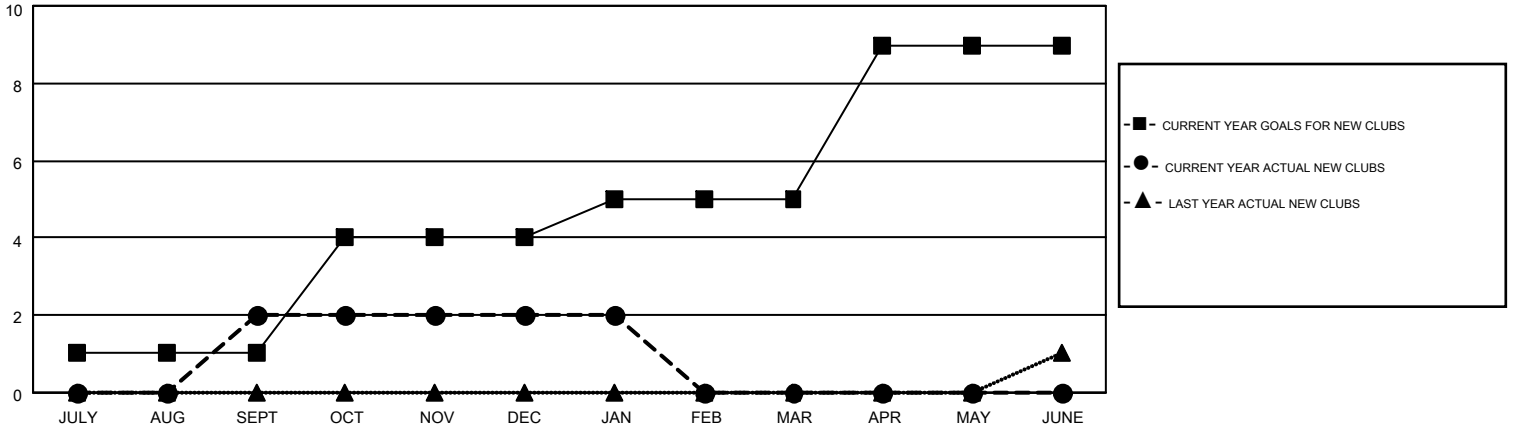
LOCATION: OKLAHOMA

GMT: HAL GRIFFIN

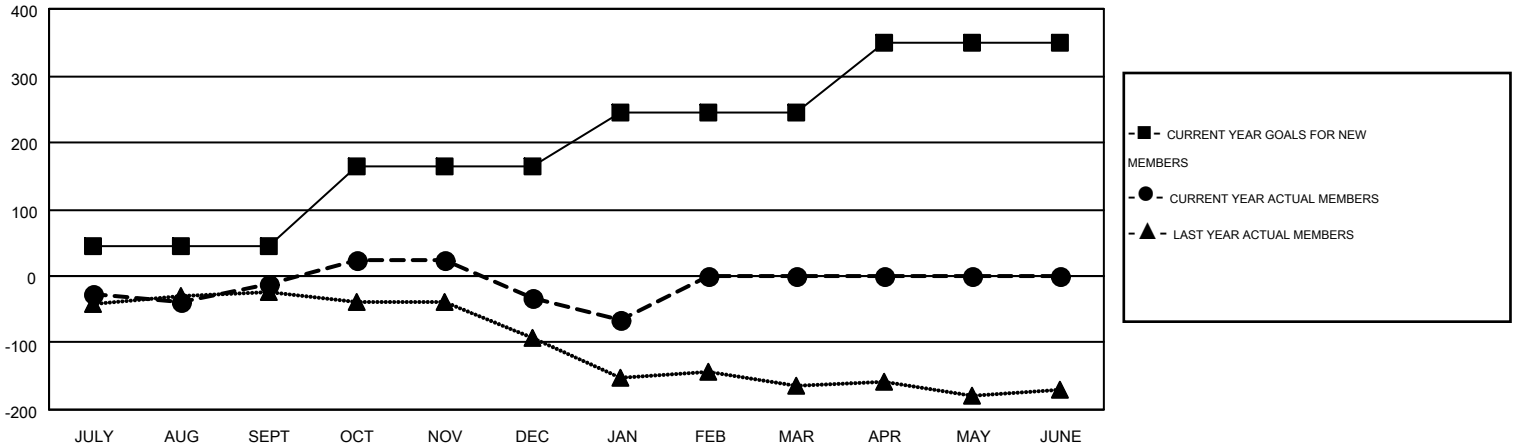
GMT CA 1

Clubs					Members				
RESULTS FOR 2014-2015					RESULTS FOR 2014-2015				
QUARTER	NEW CLUB GOAL	NEW CLUBS	DROPPED CLUBS	NET GAIN/LOSS	QUARTER	NEW MEMBER GOAL	CHARTER AND NEW MEMBERS ADDED	DROPPED MEMBERS	NET GAIN/LOSS
JULY/AUG/SEPT	1	2	1	1	JULY/AUG/SEPT	46	167	178	-11
OCT/NOV/DEC	3	0	2	-2	OCT/NOV/DEC	118	122	143	-21
JAN/FEB/MAR	1	0	0	0	JAN/FEB/MAR	82	40	75	-35
APR/MAY/JUNE	4	0	0	0	APR/MAY/JUNE	103	0	0	0

GOALS AND ACTUAL NEW CLUBS CUMULATIVE



GOALS AND ACTUAL MEMBERS CUMULATIVE



DROPPED CLUBS: 3	105 CLUBS OF 175 ADDED 1 OR MORE NEW MEMBERS	<u>GENDER DISTRIBUTION</u>	
<u>DROPPED MEMBERS</u>		MALE	3,142 (71.17%)
DECEASED	32	FEMALE	1,273 (28.83%)
CLUB CANCELLED	32	<u>FAMILY UNIT MEMBERS</u> 638	
OTHER	332	<u>HEAD OF HOUSEHOLD</u> 310	
TOTAL	396	<u>NON-HEAD OF HOUSEHOLD</u> 328	

[CLICK HERE FOR HEALTH ASSESSMENT DATA](#)